

Split Core Current Transformer

CR3100 Series



CR3110-3000



CR3111-3000

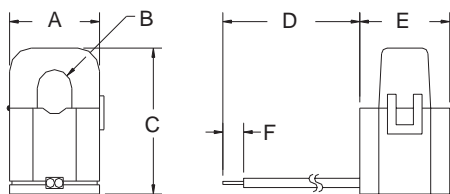
PART NUMBER

CR3110 - 3000 75 Amp
CR3111 - 3000 100 Amp

SPLIT CORE CURRENT TRANSFORMERS

Part Number	I _{max}	V _{max} RMS	T _e (typ.)	DCR	Frequency
CR3110-3000	75	15	3100	515	20 - 1 KHz
CR3111-3000	100	19	3150	370	20 - 1 KHz

OUTLINE DRAWING



PART NUMBER	A	B	C	D	E	F
CR3110-3000	1.04	0.40	1.58	6.00	1.04	0.24
CR3111-3000	1.27	0.58	1.63	6.10	1.27	.20

The **CR3100** Series Split Core Current Transformer is designed to provide a low cost method to monitoring electrical current. A unique hinge and locking snap allows attachment without interrupting the current-carrying wire. High secondary turn will develop signals up to 10.0 VAC across a burden resistor.

Applications

Portable Instruments
 Sub-Metering
 Monitor Motor Loads

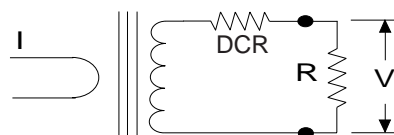
Features

Small Size
 Low Cost
 High Secondary Turns
 Secure Locking Hinge

Specifications

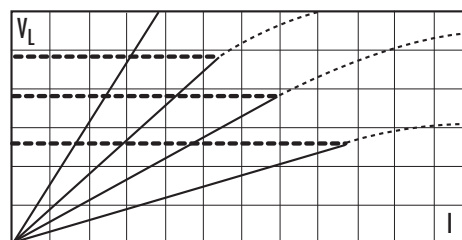
Maximum Continuous Primary Current: 75 AAC
 Secondary Turns: 3000
 Wire Lead: AWG #22
 DC Resistance: 460 Ohms @ 20° C
 Frequency: 50/60 Hz

Regulatory Agencies



$$V = \frac{I \times R}{T_e} \quad V_L = V_{max} - \left[\frac{I \times DCR}{T_e} \right]$$

For best linearity, choose R such that $V < 0.8 V_L$



Another HUNTINGTON ELECTRIC Company

CR Magnetics, Inc. 3500 Scarlet Oak Blvd. St. Louis MO USA 63122 V: 636-343-8518 F: 636-343-5119

Web: <http://www.crmagnetics.com>

E-mail: sales@crmagnetics.com