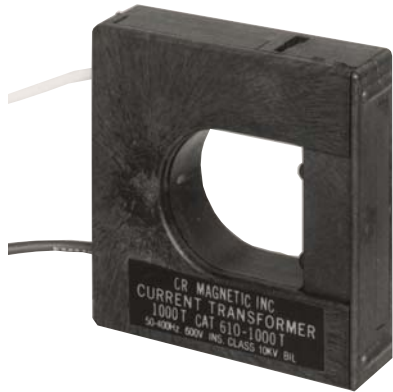


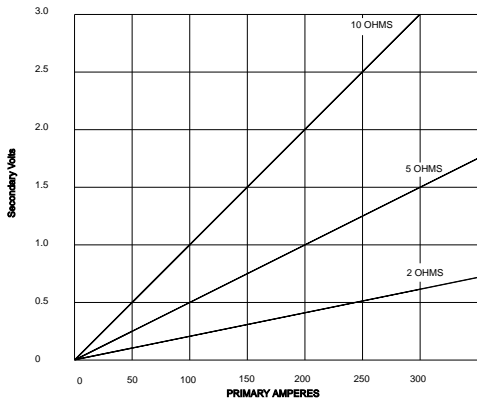
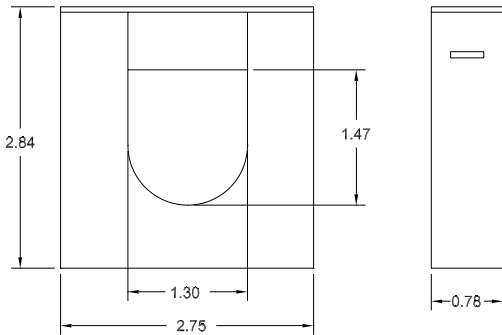
610-1000T



PART NUMBERS

610-1000T 1000 Turns

OUTLINE DRAWING



The **610-1000T** Split Core Current Transformer is designed for assembly to an existing electrical installation without the need for dismantling the primary bus or cables. It incorporates a snap fit between the fixed and removable sections.

This transformer is intended for use with high input impedance devices that require signal voltages up to 5 VAC.

The output can be rectified and filtered for devices requiring DC input. The non-linearity and voltage drop of the rectifiers and filters must be considered in the choice of the loading impedance.

Application
For Energy Management Systems and Instrumentation Equipment having a High Input Impedance, eg. 14K ohms minimum

Frequency
50-400 Hz

Insulation Level
0.6 kV, BIL 10 kV full wave

Construction
The core and windings are encased in UL approved plastic

Continuous Thermal Current Rating Factor 330A at 30° C amb
250A at 55° C amb

Flexible Leads
UL 1015 105° C, CSA approved, #18 AWG, 24" long unless otherwise specified

Approximate Weight
10 oz

Regulatory Agencies



Another HUNTINGTON ELECTRIC Company

CR Magnetics, Inc. 3500 Scarlet Oak Blvd. St. Louis MO USA 63122 V: 636-343-8518 F: 636-343-5119

Web: <http://www.crmagnetics.com>

E-mail: sales@crmagnetics.com